

Course work

The Simpsons have to use a taxi. There are two taxi companies working in the area Taxi A and Taxi B.

Taxi A charges £1 pick up fee and 75p per mile of journey.

Taxi B charges £3 pick up fee and 25p per mile of journey.

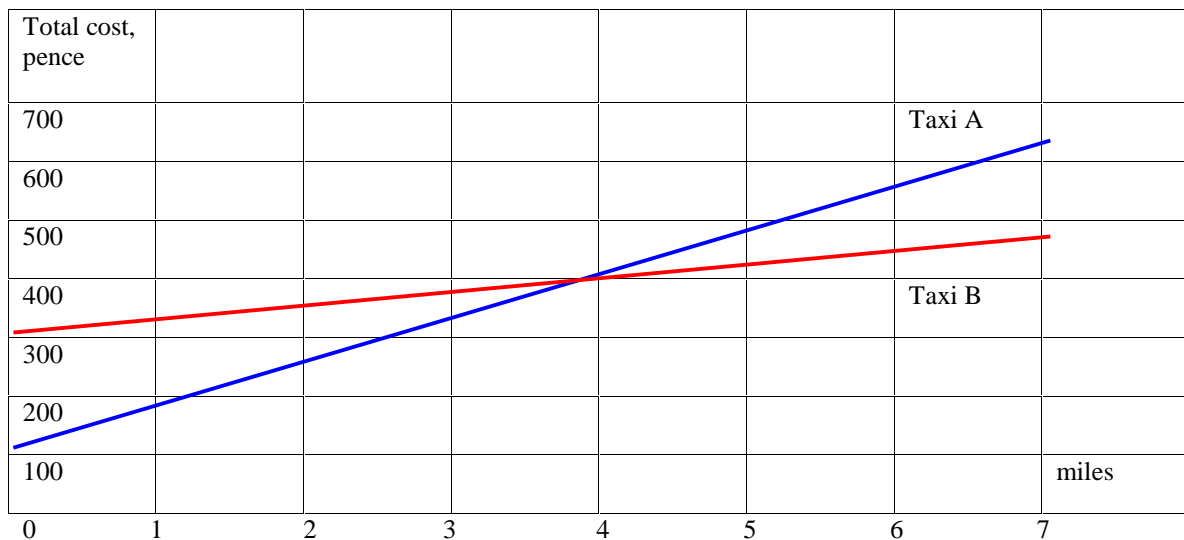
Investigate these two schemes.

Taxi A

1	2	3	4	5
Miles	Pick up fee, pence	Price per mile, pence	Cost of journey 1x3	Total cost 2+4
1	100	75	75	175
2	100	75	150	250
3	100	75	225	325
4	100	75	300	400
5	100	75	375	475
6	100	75	450	550

Taxi B

1	2	3	4	5
Miles	Pick up fee, pence	Price per mile, pence	Cost of journey 1x3	Total cost 2+4
1	300	25	25	325
2	300	25	50	350
3	300	25	75	375
4	300	25	100	400
5	300	25	125	425
6	300	25	150	450



Conclusion: If the Simpsons do a less than 4 miles journey it is cheaper to use Taxi A, if a journey is more than 4 miles Taxi B is better.

Elena Worsfold